

URBAN WEEDS GUIDE TO BORDER CROSSING

“Nationalism is represented in the ways we equate national identities with flora - we talk of what belongs within national space, even if plants grow over several continents. Plants have no national or political borders....I would like to see a mixed ecology - one that is still evolving, moving, migrating - rather than one contained in some botanist's obscene concept of purity.”

Weeds & Aliens: An Unnatural History of Plants by Benjamin A. Huseby

EPA



PACIFIC JUNGLE

LOT AREA:
7,800 sq ft

LOCATION:
Franklin Ave and
Pacific Street

SPECIES OBSERVED:
Mugwort, siberian
elm, ailanthus
forest, wild
rose, pokeweed,
lambsquarter,
daisy fleabane,
clover

SCORE:

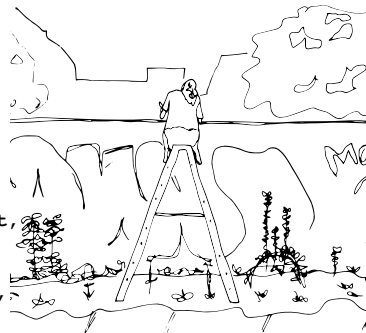
Approach the gate and stand an arm's length away. Close your eyes and peer into the lot. Slowly move toward the gate. Place your left or right foot through the gate. Firmly plant your foot on the ground. Press your face through the bars of the gate and into the lot. Let your arm extend and greet the weeds. Take 3 breaths and as much time as you need to observe.

FRIENDS & PRINCESSES GARDEN

LOT AREA:
1,630 sq ft

LOCATION:
Classon Ave and
Pacific Street

SPECIES OBSERVED:
Princess tree forest,
horseweed, west
indian nightshade,
horseweed, plantain,
siberian elm



SCORE:

Work with a partner. Together, carry a ladder to the metal roll down gate. Firmly plant the ladder as close to the gate as you can. Next, take turns ascending the ladder to observe what is growing on the other side. Describe to your partner what you see. If you have a free hand, take notes or make a quick drawing based on what you hear. Switch roles and repeat.

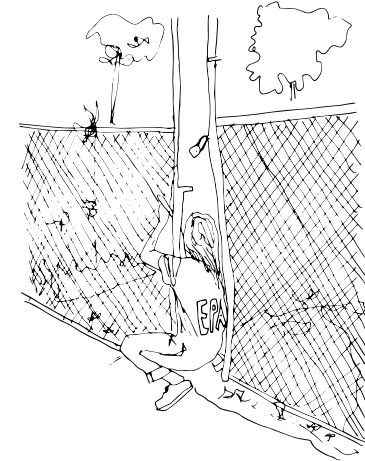


GRAND TERRA CORNER GARDEN

LOT AREA:
10,000 sq ft

LOCATION:
Pacific Street and
Grand Avenue

SPECIES OBSERVED:
Ailanthus,
mugwort,
horseweed,
virginia creeper,
west indian
nightshade,
prickly lettuce,
rogue tomato and
squash



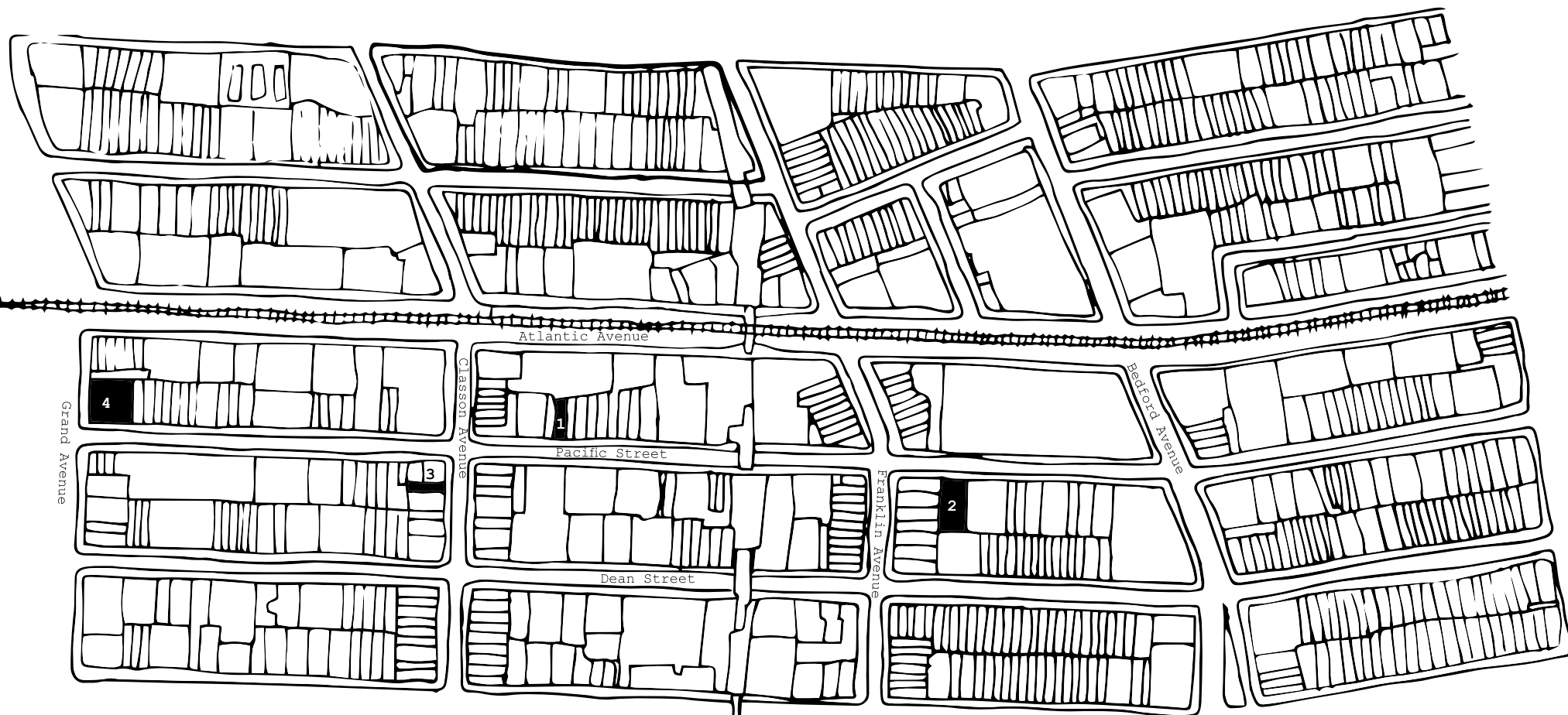
SCORE:

Work with a partner. Approach the fence and take a moment to observe all forms of life you can see. Choose one person to enter the lot by sliding carefully through the chainlink fence. The person entering the site should explore the terrain and blend into the landscape. The partner observing from outside the lot should practice being a witness, try to locate your partner, notice how their body changes. Switch roles and repeat.

(Warning, only attempt if you feel safe entering the lot)



SITES MAP



- 1. EPA Headquarters
- 2. Pacific Jungle
- 3. Friends and Princesses Garden
- 4. Grand Terra Corner Garden